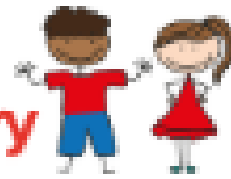


Holmesdale Community
Infant School and Nursery



Y2 Information Session

Aims of the session:

- To meet your child's teacher and see their classroom
- To learn more about the Year 2 curriculum – including the following:
 - The structure of the school day
 - Our School Values and Learning Behaviours
 - Our curriculum
 - Reading
 - Enrichment opportunities
 - Home Learning



Welcome to Year 2

Woodpeckers



Falcons



Squirrels





Who's who?

Woodpeckers Class

Mrs Learwood (24 years)

Year 2 Leader/ Maths Leader/DDSL/SMHL

Mrs Flanagan- LSA

Squirrels Class

Mr Crosbie - Class Teacher

Physical Activity Leader

Mrs Blashfield – LSA

Falcons Class

Mrs Ballsom– Class Teacher

RE Leader

Mrs Judge– LSA



School day

- Children enter through the classroom door.
- **Doors open at 8.45am. Register at 8.55am**
- Enter the school through the main playground gates only not the gate by the hall.
- Every day children need their book bag, a named water bottle, jumper and a coat (even if the weather is nice as you never know).

Outdoor Learning (fortnightly)

- Includes all areas of the outdoor learning environment e.g. the playground/astro, pond, woodland.
- Cross curricular.
- Keep an eye on notices and reminders to see if wellies are needed.

PE

- Children to come to school dressed in their PE kit on their PE days.
- Please remember we have a school rule that no jewellery should be worn to school at any time.
- Woodpeckers - Monday & Wednesday
- Falcons – Tuesday & Thursday
- Squirrels - Monday & Thursday

Timetable

	8.45-9.15	9.15 - 9.40	9.45-10.15		10.15-10.30	10.30-10.50	10.50-11.45	11.45-12.10	12.10-1.10	1.10-1.45	1.45-2.10	2.10-2.40	2.40-3.05
MONDAY	<u>Soft start</u> Busy Book Activity	Phonics whole class 9.40 Go Noodle	English/Maths		KS1 Assem	B	English/Maths	Whole Class Reading/ Little Wandle Group Reading	L	Register & Mindfulness 1.20 Mastering Number	PE Games/ Dance	<u>H'writing</u>	Tidy up Bookbags Story
TUESDAY	<u>Soft start</u> Busy Book Activity	Phonics whole class 9.40 Go Noodle	English/Maths		KS1 Assem	R	English/Maths	Whole Class Reading/ Little Wandle Group Reading	U	Register & Mindfulness 1.20 Mastering Number	Foundation Subject/Topic		Tidy up Bookbags Story
WEDNESDAY	<u>Soft start</u> Busy Book Activity	Phonics whole class 9.40 Go Noodle	English/Maths		Whole school singin g assem	E	English/Maths	Whole Class Reading/ Little Wandle Group Reading	N	Register & Mindfulness 1.20 Mastering Number	PE Gym	<u>H'writing</u>	Tidy up Bookbags Story
THURSDAY	<u>Soft start</u> Busy Book Activity	Phonics whole class 9.40 Go Noodle	English/Maths			A	English/Maths	Whole Class Reading/ Little Wandle Group Reading	C	Register & Mindfulness 1.20 Mastering Number	Foundation Subject/Topic		Tidy up Bookbags Story
FRIDAY	<u>Soft start</u> Busy Book Activity	Phonics whole class 9.40 Go Noodle	9.40-10 Library	10-10.30 PSHE		K	RE	Music	Whole Class Reading/ Little Wandle Group reading	H	Register & Mindfulness 1.20 Mastering Number	1.45 Celebration Assembly	2-2.45 Story



Health & Safety

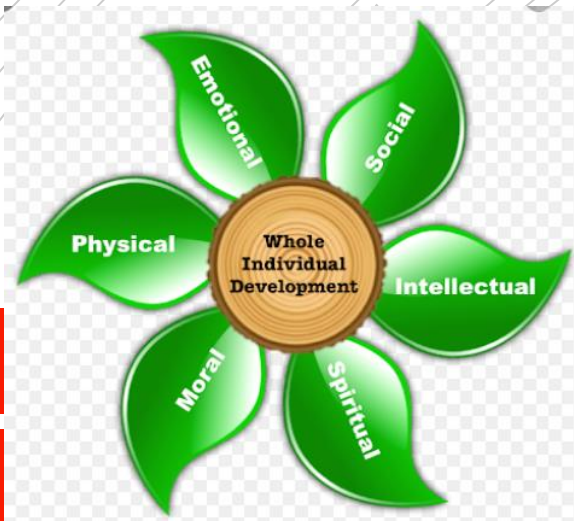
We will continue to.....

- Supervise children washing/sanitising their hands at regular intervals throughout the day.
- Keep all spaces well ventilated.

Our ethos:



**Children are at the heart of
all that we do;
working together to be the
best that we can be**



Year 2 Learning

Our School Holistic Approach will be to continue to support the children with.....

- **A safe and happy community**
- **Wellbeing** – Colour Monster displayed in each class and worry box.
- **Relationships** – PSHE lessons.
- **Learning Behaviours** – Displayed in classrooms and explicitly taught.
- **Engagement** – Visual timetables.
- **Inclusive Curriculum** – Daily mindfulness sessions.
- **Core Skills** - Reading with an adult each week.

Maths

- We follow White Rose and The Mastering Number Programme in Year 2.
- More information to follow at our Maths evening on Thursday 9th November from 7-8.30pm about how we teach Maths, progression and how to support your child at home.





Phonics Little Wandle

- We are a 'Little Wandle' school and follow the Little Wandle phonics scheme of learning.
- Year 2 follow a structured programme revising the phase 5 phonemes and then moving on to the spelling programme which covers all the national curriculum elements of spelling.
- More information to follow at the curriculum evening in November about how we teach phonics, the progression and how you can support your child at home.



Reading

Reading

- We ask that you read for at least 10 minutes with your child each day and that this becomes a part of their routine.
- Your child will be sent home with new books every Thursday.
- Please return your child's reading record and all their books every **Wednesday** so they can be read and commented on as appropriate and any comments from their weekly reading added.
- Your child will be sent home with two books a week. A decodable book matched to the correct phonic stage for your child, (read in school with an adult), which they should be able to read independently and fluently and a non-decodable book of their choice.
- The decodable book will have a colour sticker with a shape on and the non-decodable book will have a coloured sticker with an 'X' on.



Reading cont...

- Children will also bring home a library book on a Friday after their library session. If they would like to change their library book they need to remember to bring that book back for their weekly library session on a Friday.
- Please write the name of any books that your child reads at home and make a brief comment as well. Include all books i.e. school library books, decodable/non-decodable books as well as any books they read from home or the local library.
- *To learn more about how reading is taught please attend the curriculum evening in November*



Vocabulary Victor

Rex Retriever

Predicting Pip

Inference Iggy

Sequencing Suki

Reading cont...

Comprehension

- Children develop comprehension skills as they learn to read and when they make the transition from learning to read to reading to learn they gain a greater capacity to focus on comprehension
- There are five main elements of reading comprehension:
 - Vocabulary - They need to be able to specifically refer to vocabulary in the text and what is meant by that word and why it may have been used.
 - Retrieval – Can they directly retrieve information from a text related to a specific question?
 - Inference – Are they able to infer using clues in the text? This is the hardest of all 5 skills and children need to be able to read between the lines.
 - Prediction – Making predictions based on what they already know – using the front cover, blurb or the first few pages they have read.
 - Sequencing – Are they able to sequence events in the story?

A reading letter will be attached to the reading record books to explain how reading works.

Topics

Topics

Autumn Term

- All about me
- Traditional Tales with a twist
- Environment – endangered animals and how to protect the planet



Spring Term

- Transport
- How are you?
- Healthy Living



Summer Term

- Significant people in history
- Plants, living things and animals



Enrichment

Enrichment

We will be taking part in a variety of workshops/trips:

- Dance workshops – traditional tales and the environment
- Reigate Library visit
- Great Fire of London workshop
- Fire safety workshop
- Florence Nightingale & Mary Seacole workshop
- Sparkfish 'Christmas Journey'
- British Wildlife Centre



The following are also timetabled in:

- Use of the outdoor learning environment
- Library visit

There will also be opportunities to take part in whole school events e.g. Friendship week, Feeling good week,

School Fund

- We do ask for an annual contribution per year group to cover the cost of all our enrichment activities.
- More information will follow.



Jigsaw



Jigsaw/Mindfulness:

- As a whole school we follow the scheme, 'Jigsaw'. This is part of our PSHE (*Personal, Social, Health Education*) lessons and will teach the children to become more reflective and mindful.
- We also have a timetabled mindfulness session each day after lunch to give the children a chance to reflect on their feelings and address any concerns or questions.



Values

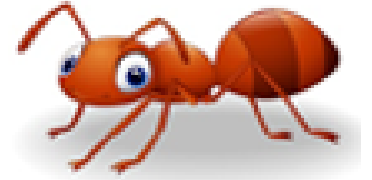
September	Friendship	Friends know how to look after each other through good and bad times
October	Perseverance	Always doing our best and not giving up
November	Respect	Means valuing myself, other people and our environment
December	Appreciation	Knowing what other people do for us and how to thank them. It means showing that you are thankful
January	Co-operation	Working together and helping one another
February	Patience	Staying calm and waiting until your turn comes around
March	Trust	You can be relied on to do the right thing
April	Caring	Looking after ourselves and others and it means looking after the world around us
May	Tolerance	Is accepting others, even when they make mistakes. Tolerance is appreciating our differences
June	Responsibility	You can be in charge of yourself, other people or things, and you are trusted to do the right thing
July	Courage	Means facing what you might be worried about or afraid of

Learning Behaviours

Perseverance



Problem Solving

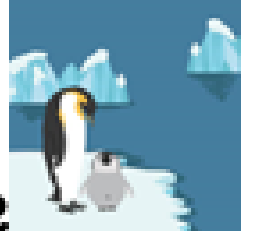


shutterstock.com • 480040628

Playing and Exploring



Responsible



Resourceful



Reflective



HOME LEARNING

Home Learning

Reading

- Daily reading for at least 10 minutes a day.

Dip and Do:

- Home learning will follow the format 'Dip and Do', meaning you have a variety of activities to choose from for your home learning.
- A range of activities covering all areas of learning will be sent home to be completed as and when suits you as a family. These will range from cooking to craft to writing!
- Work to be completed and added to their home learning folders.
- We encourage your child to engage with as much of this as possible.
- We will share the children's learning in class when they are returned.
- This will be sent half termly.



Interventions

Interventions

- A variety of intervention groups will be taking place throughout the school year, including:

Phonics:

- **'Keep up'** phonics, which will be led by skilled teachers & LSA's. This is for those children who have been identified as needing extra support in phonics following the 'Little Wandle' – Letters & Sounds DFE programme. These sessions will ensure that all children will receive support on a 'need to' basis.

Additional Readers:

- Children who need extra support with reading will be identified and targeted for this intervention to ensure ongoing and regular support.



Assessment

- Assessment will be both informal (ongoing throughout the year, including regular reading and phonics assessment) and formal (at particular points in the year).
- The learning will be tailored to ensure there is challenge and support for all. In order to achieve this we will be following the Year 2 curriculum with specific reference to the Teacher Assessment Framework for the end of Key Stage 1.
- No longer a statutory requirement for schools to undertake SATS tests or report end of Key Stage 1 data to the Local Authority. These will continue to be used to support the teacher assessment judgements made at the end of Key Stage 1.



Rewards

At Holmesdale we encourage and reward positive behaviours and 'good choices'.

Day to day class-based rewards that recognise effort, achievement and kindness.

- Each week the class teacher will choose 2 children to receive a golden star award for displaying one of our learning behaviours. In addition to this, 2 children will be chosen by their friends for something they do really well. These 4 children will receive a certificate and be celebrated in our celebration assembly.
- In Year 2 we have a 'Star Achiever' system, whereby children are awarded star achievers for displaying good learning behaviours and values.
- Additionally, each class has the opportunity throughout the week to be awarded with golden tokens. These can be given by any member of staff. The class in the year group with the most tokens at the end of the week, will be awarded with the 'class of the week' trophy.

Golden Star Award
From a Friend

_____ has been nominated for a
Golden Star Award for _____

Signed _____ Date _____

Golden Star Award

_____ has achieved a Golden Star Award for _____

Signed: _____ Date: _____





**PLAY
LEADER**

Roles to enhance responsibility



Star Achievers

- 5 per week.
- 'Special helpers'.

Playleaders

- 2 per week.
- In charge of supporting play and inclusion in the playground.

Eco Warriors

- 2 per half term.
- Responsible for lights, taps, recycling etc.

Library Monitors

- 2 per half term.
- 1 day a week to ensure the library is kept tidy.

School Council

- 2 per term.
- Democratic.
- Children who would like to be on school council tell the class why they would be good at this role.
- Children in the class choose 2 children they would like in a blind ballot.

Early Morning / Hokey Cokey club

Early Morning Club

If you would like a place in our Early Morning Club please email

bookings@holmesdale.surrey.sch.uk

Hokey Cokey – After School Club

Via 'Campglide'





THANK
YOU!

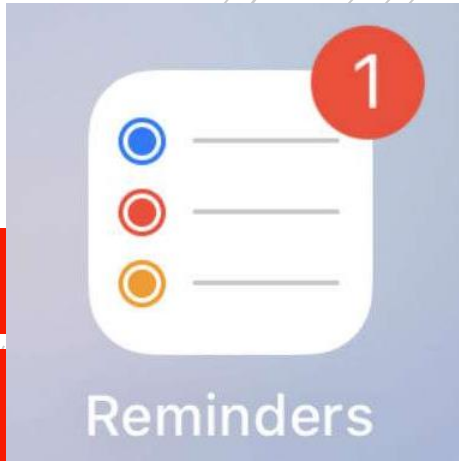
PSA

- Our PSA here at Holmesdale do such a fantastic job organising events and activities to raise a phenomenal amount of money for the school.
- All children in the school benefit in so many ways from the money they raise.
- Please support the PSA in any way you can, so they can continue to try and raise funds in a very different way than they are used to.
- If you have any ideas of ways they could raise money this academic year, I am sure they would love to hear about it.

Newsletter...

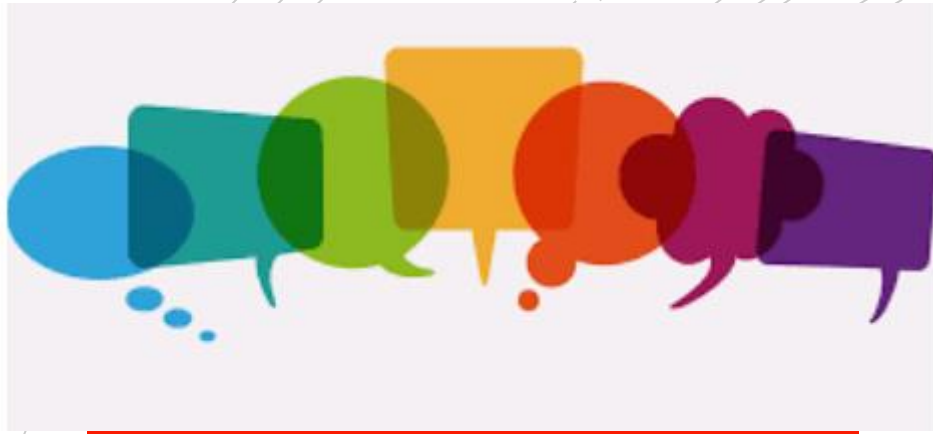
- Monthly newsletter will be sent out on the last Friday of the month or the last day of each term.
- We look forward to sharing all our wonderful learning with you.





Reminders

- **Coat every day**
- **Everything** to be clearly named
- No painting aprons needed (supplied by the school)
- Please bring in book bag and water bottles everyday.
- Plenty of notice will be given if additional items are needed in school (please read the weekly notices for Year 2 every week)
- **One** sensible sized key ring on book bags only
- Hair accessories to be functional not fashionable
- Long hair must be tied up, especially on PE days
- Jewellery not permitted.
- Analogue watches can be worn when we are learning to tell the time in school.



Contacting your class teacher

- If you would like to speak with your class teacher please do so by emailing the school office who will forward the email to the relevant member of staff.
- Class teachers will respond to all emails within 48 hours, excluding weekends.