

# HOLMESDALE PSA NEWSLETTER



End of Term ISSUE | Winter 2021 | HOLMESDALE PARENTS & STAFF ASSOCIATION | REGISTERED CHARITY NUMBER 1131038

PSA stands for Parent Staff Association. We are all part of it, working together to make the school even more special. The main role of the PSA is to raise money for Holmesdale School while helping to strengthen the sense of community for the children and parents alike.

**As we move towards the end of the Winter Term we wanted to share our collective achievements and thank you for all your involvement in the activities. This term, despite the challenging circumstances, all the activities we have done together have raised around £6000 for the school.**

We kicked off the term with some evening parent drinks in the playground to welcome in new parents to the school. We then had a brilliant bunch of parent volunteers come together and coordinate a truly wonderful Winter Woodland Walk complete with Santa's grotto with two real Reindeer. To round off the year our children walked to Lapland, and they decorated Christmas baubles from Upright Construction who pledged £1 to the school for each decorated bauble for their display.



Thank you for all the brilliant creativity that you brought to the Winter Walk!

Upright Construction offered the school £1 for every bauble decorated for their display.



**Newsflash:** £10,000 PSA funds are being transferred imminently to the school for tablets, curriculum resources (twinkl, discovery) and visualisers...

## THERE ARE LOTS OF EASY WAYS TO KEEP HELPING

### My Nametags

24% of every order will be donated to our PSA. Just use our school ID 27019 on the checkout. [www.MyNameTags.com](http://www.MyNameTags.com)

### Easyfundraising

Help raise funds for the school through your online shopping using Easyfundraising, at NO EXTRA COST TO YOURSELF!

<https://www.easyfundraising.org.uk/causes/holmesdaleschoolreigatepsa/>

### Amazon Smile

Select Holmesdale School Parents and Staff Association and Amazon donates 0.5% <https://smile.amazon.co.uk/>



## THE PSA COMMITTEE 2021/2022

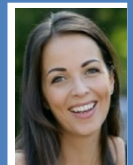
Kate Young  
Co-Chair



Fiona Rider-Morley  
Co-Chair



Miriam Greaves  
Co-Vice Chair



Rachael Brett  
Co-Vice Chair



Paul Copeman  
Treasurer



Rebecca Cahill  
Vice Treasurer



Caroline Doubt  
Secretary



Natalie Ross  
Publicity Secretary



## SUMMER FAIR COMMITTEE

If you're new to the school and haven't been to an event previously, what usually happens is we have an event committee who organise the event with the PSA Committee acting as a support network.

Get your thinking caps on and have a think about what YOU would like to see and do at the Summer 2022 fair. If you work in events or have a passion for organising a party then please do volunteer for the Summer Fair Committee... **WE NEED YOU!**



## MEMORIAL GARDEN SPRUCE-UP

# THANK YOU!



A huge thanks to all the volunteers, big and little, who gave their time in November to help tidy, plant and paint in the Memorial Garden (by Squirrels' classroom).

The whole area now looks really tidy with a fresh lick of paint on the fence.

Come the spring time, the children will hopefully see lots of spring colour in the pots!



## Parent Volunteers WhatsApp Group

**We can't hold any events without the help from volunteer parents and every single child benefits from the money we raise for the school.**

If you would like to keep updated with the volunteering opportunities then please feel free to join our Volunteers WhatsApp Group

Just email the PSA email address ([holmesdalepsa@gmail.com](mailto:holmesdalepsa@gmail.com)) with your telephone number or share your interest with your class rep who can connect you.



### Message from the PSA Committee

Our next PSA meeting will be held on **11th January 2022** on Zoom!

Please save the date and remember **everyone** is welcome to join in. The Zoom details will be shared with the class reps ahead of time.

Until then, from all on the PSA Committee, we wish you a Merry Christmas and a Happy New Year.

Sincere thanks for all the support you have shown the school through your contributions and engagement with the activities.  
**See you in 2022!**

*It has been a joy to hold face to face events in school this term and I am grateful to everyone who contributed time towards their organisation and the teams of people who worked together to run them.*

*Once again, your creativity and sense of community has made a difference to every child's school experience. You continue to demonstrate your support for our school, and I thank you on behalf of the whole staff team for all you do.*

*Thank you and Merry Christmas.*

**Mrs Mullarkey**  
Head Teacher



**GOT IDEAS, QUESTIONS OR ABLE TO HELP?**

*We would love to hear from you!*

Email [holmesdalepsa@gmail.com](mailto:holmesdalepsa@gmail.com)



**halliwellmarks**  
Independent family estate agents  
Reigate, Redhill and surrounding areas

**Proud platinum sponsors of Holmesdale School PSA**

For every property we sell or let for Holmesdale School parents, or family and friends of parents, we will donate to the school:

**£500 per completed sale**  
**£200 per completed let**

Call us on 01737 303099 to arrange your free valuation, or email [admin@halliwellmarks.co.uk](mailto:admin@halliwellmarks.co.uk) with the code HOLMHM