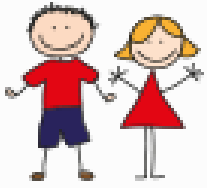
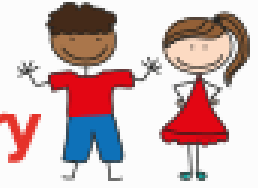


JANUARY 2024



Holmesdale Community Infant School and Nursery



HOLMESDALE SCHOOL NEWSLETTER

JANUARY

TAKE A PEEK

PAGE 2	Message from Mrs Mullarkey
PAGES 3 / 6	Feature Articles
PAGES 7 / 8	EYFS News
PAGES 9 / 10	Year 1 News
PAGES 11 / 12	Year 2 News
PAGE 13	Sports Round

DATES FOR YOUR DIARIES

FEBRUARY

- ❖ 5th -9th - Feeling Good Week
- ❖ Tuesday 6th - Parents Evening (Woodpeckers only)
- ❖ Wednesday 7th – Parents Evening
- ❖ Thursday 8th – Parents Evening (excl Woodpeckers)
- ❖ 12th – 16th – HALF TERM
- ❖ Tuesday 20th at 2.30 - Volunteer Information Meeting

A MESSAGE FROM MRS MULLARKEY

Dear Families



Welcome to January's newsletter, and I hope this message finds you well. I want to express my heartfelt gratitude to all the parent volunteers who generously gave their time this month to support our school community. Whether it was helping children with reading, engaging in design and technology activities, or sharing insights about their professions with our reception children, your contributions have been invaluable.

As you may be aware, we had the pleasure of hosting police officers who brought a police car into the playground and even turned on the blue lights and sirens. The children had the opportunity to ask questions and learn about the role of a police officer.

Additionally, we were fortunate to have visits from three doctors who spoke to our reception children about their profession and responsibilities. The children were captivated as they explained their role and the various tasks they perform to ensure patient safety and comfort.

Thank you for your continued support and partnership.

With best wishes
S. Mullarkey

HOLMESDALE POND DEVELOPMENT

The story so far.....



Phase 1 of our pond development commenced on Saturday 30th September last year. It was a lot of fun and volunteers made a fantastic start to our project.



We need YOUR help with Phase 2...





VOLUNTEERS NEEDED FOR PHASE 2 OF OUR POND DEVELOPMENT

**SATURDAY
2ND MARCH 2024**



We need your help to develop the pond area at the school for the children to use.

Please join us from 10:00am - 2pm for drinks, sandwiches and to work on stage 2 of the pond development.

We Need Help:

- **Putting in the new ponds**
- **Putting in new paths**
- **Tidying**
- **Planting**

[You can view the proposed plans here](#)

Thank you to Jamie at Campbell & Co Architects for the generous donation of time and resources

TEA, COFFEE & SANDWICHES PROVIDED



Holmesdale School,
Alma Road, Reigate, Surrey, RH2 0BY

Contact Zoe
07946070742



Eco-Club Update

Eco-club has enjoyed learning about winter birds and the children have created a lovely display of some of our most well-known birds for our eco-board near the library.



We took part in the RSPB Big Schools' Birdwatch 2024 and recorded how many birds we saw around the school. We could hear lots of lovely birdsong and spotted woodpigeons, robins, blackbirds and magpies!



We had to be as quiet as possible to avoid scaring the birds away.

Leaning back and looking up into the trees is a lovely way to try to spot birds.



Tree Planting at Holmesdale

On a cold and wet day at the start of this year, several members of the Ahmadiyya Muslim Association were hard at work in our school grounds planting 286 tree saplings provided by Surrey County Council.

This is part of a wider aim to reach 100,000 trees planted across the UK by ladies belonging to the organisation, as part of a 2022 jubilee celebration.



A HUGE thank you to Salmaana Atta, who has been a member of our Holmesdale staff, her children and to everyone involved!



I felt proud of the work and wanted to share the story behind the trees in the meadow.

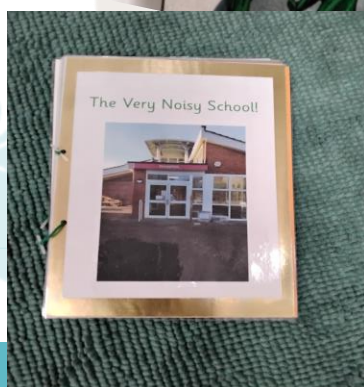
My children were also a part of this event on the day and were wet and muddy from top to toe.

It felt great that the fact that I am leaving and my children are ex-pupils but we are leaving something behind. 😊

WELCOME TO EYFS
JANUARY 2024

NURSERY AND RECEPTION

Nusery have been learning all about the 5 senses. As part of this we taste tested sour lemons and sweet bananas. We enjoyed working out what each hidden smell was. We also made a class photo book called 'The Very Noisy School' after we found lots of loud noises in school!



WELCOME TO EYFS
JANUARY 2024

NURSERY AND RECEPTION



We conducted some science experiments! We explored different substances to see if they dissolve and looked at ways we can melt ice.



We learnt about winter. We went on a winter walk and created our own winter pictures!



We have been learning about people who help us. We had visits from a doctors and police officers.

Year 1 News

Welcome to Year 1

We were very puzzled to discover that an alien called Beegu had landed in the school grounds using a parachute!

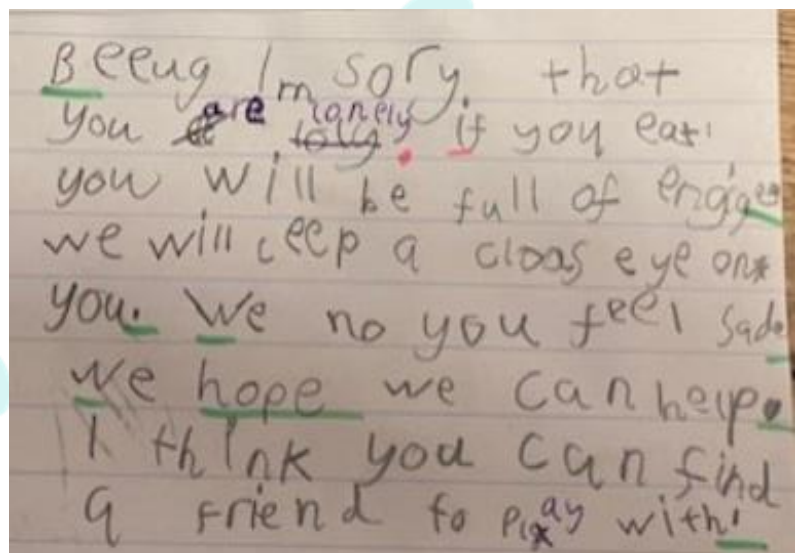
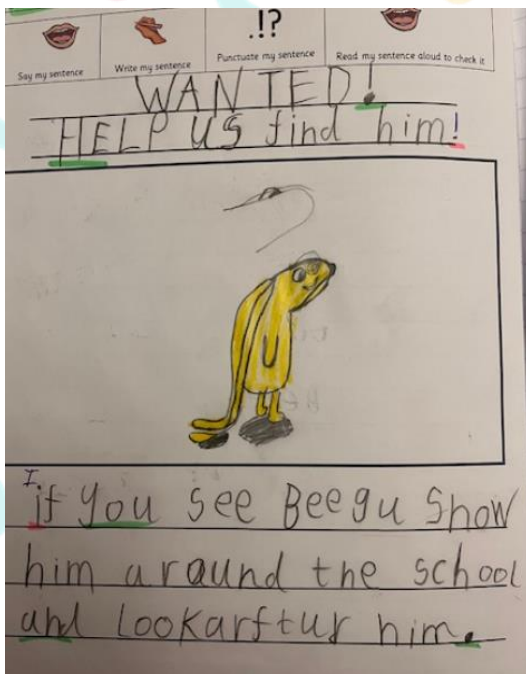


We found tiny yellow footprints...



We wrote posters to try to find Beegu. We also wrote letters for her to give her some helpful advice so she wouldn't be scared or lonely.

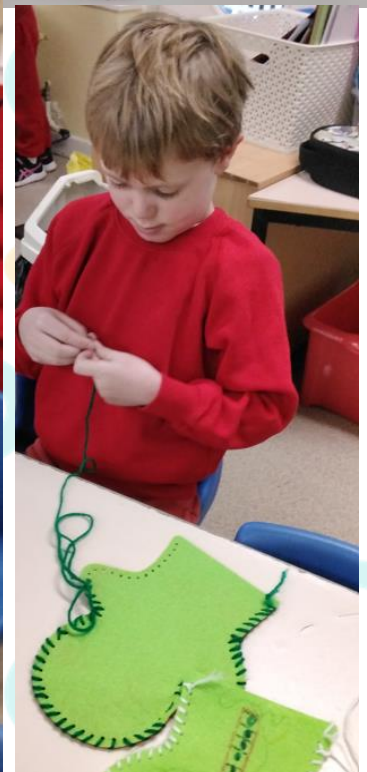
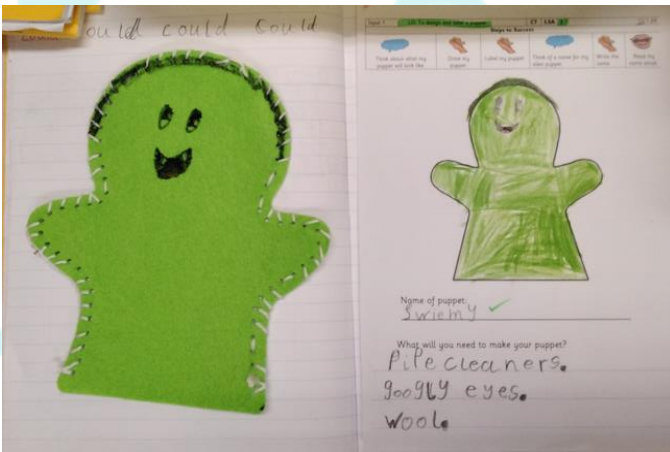
but Beegu was nowhere to be seen.



Year 1 News

Welcome to Year 1

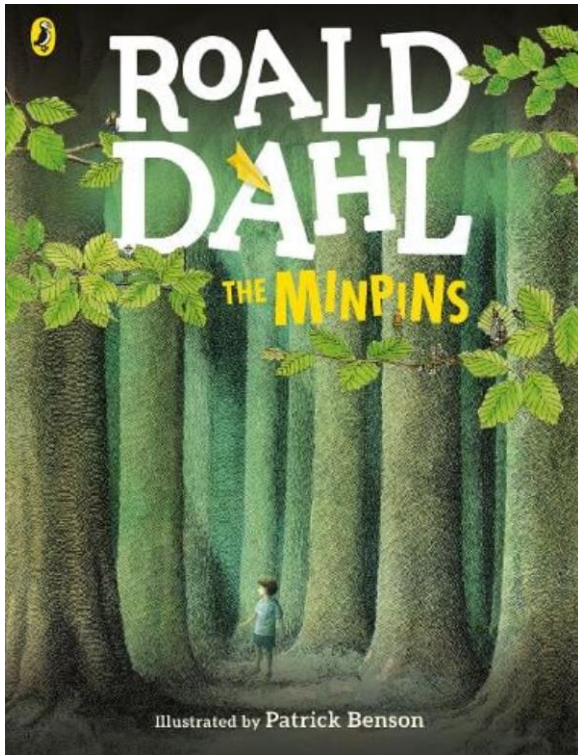
We designed, sewed and decorated alien puppet friends for Beegu to play with. The sewing was a little tricky, but we were persevering tortoises and didn't give up!



WELCOME TO

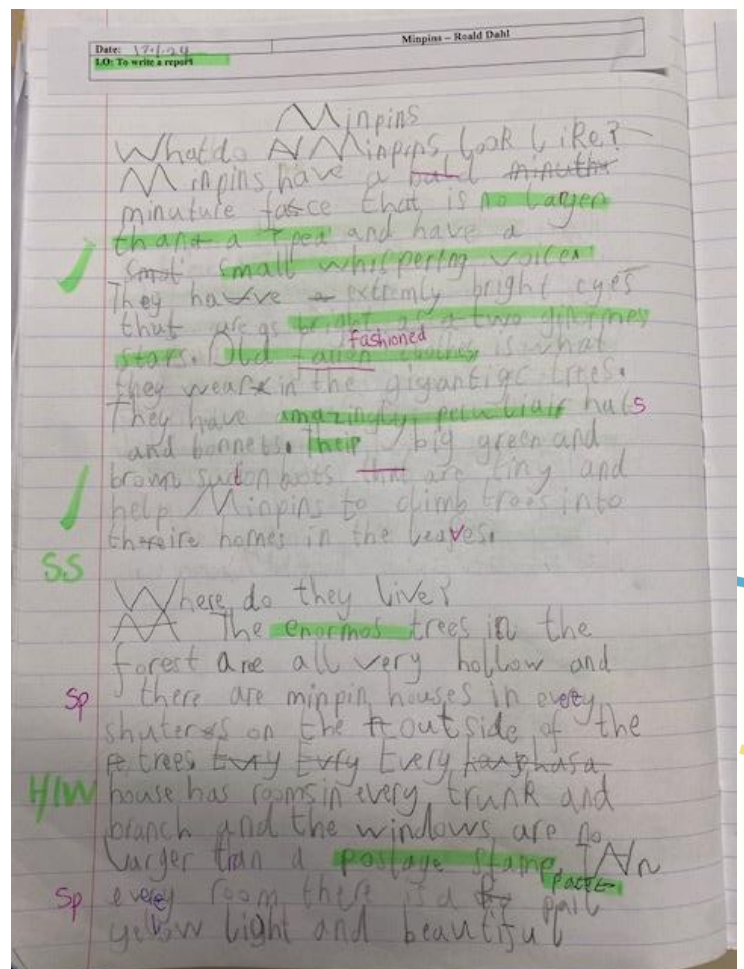
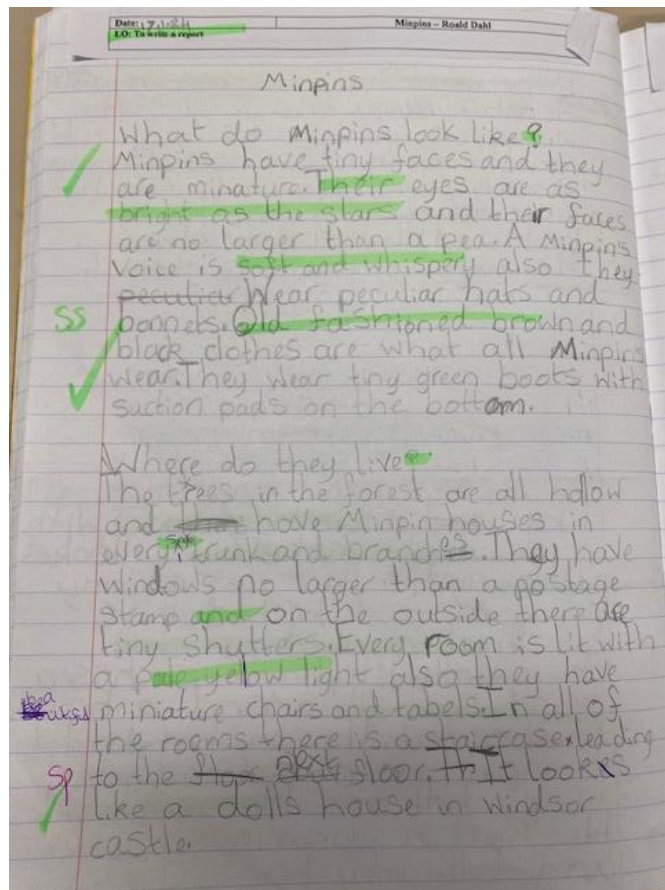
YEAR 2 NEWS

HOLMESDALE INFANT SCHOOL



Year Two have been writing reports about a Minpin from the Roald Dahl book, The Minpins.

We've used exciting language, conjunctions and a variety of punctuation in our work.



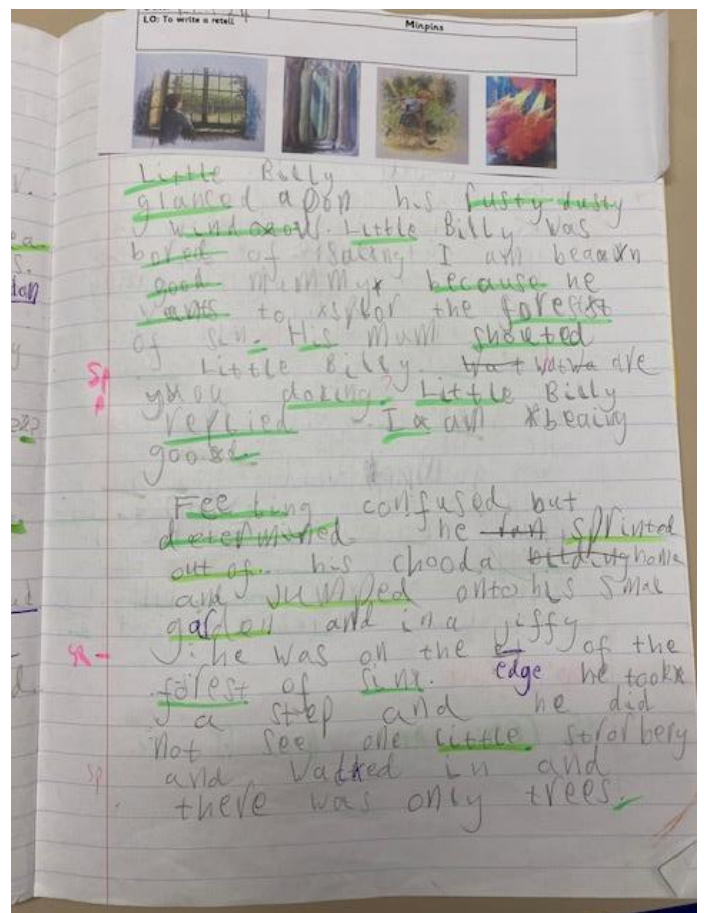
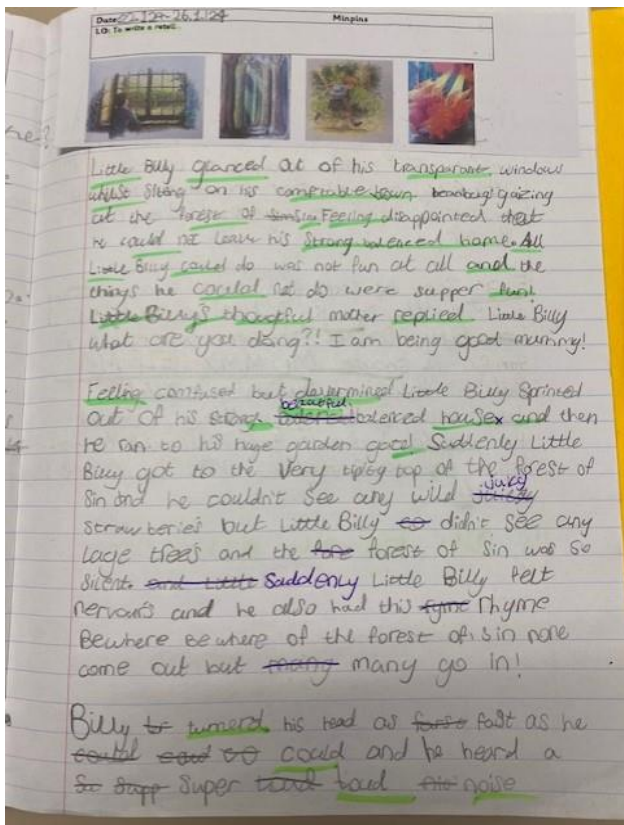
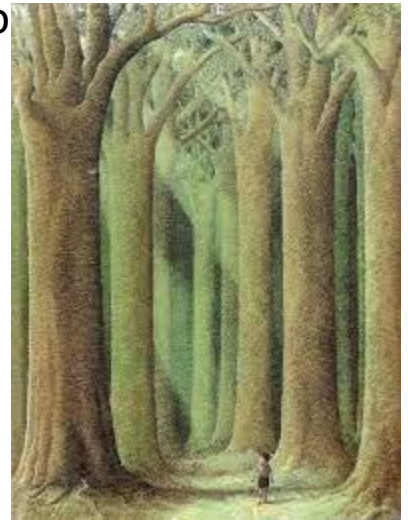
WELCOME TO

YEAR 2 NEWS

HOLMESDALE INFANT SCHOOL

We've also been writing our own retell of a familiar story and have used lots of partner talk to really engage and immerse ourselves into the book.

We wrote our own beginning to the story.



SPORTS ROUND

WELCOME

THIS MONTH'S ESSENTIAL PHYSICAL ACTIVITY UPDATES ►

Holmesdale Challenge

Challenge 1

Equipment

- Football
- Cones
- Stopwatch



How fast can you dribble the ball through the cones and back to the start?

Challenge: Can you do the same back through the cones?

ACTIVE
challenge

GET
INVOLVED!

TRY ONE OF MR CROSBIE'S
ACTIVE CHALLENGES.

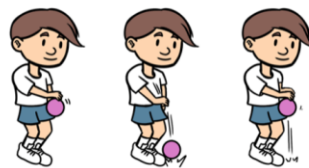
Each challenge can be completed
at home, at the park and with
friends and family. Have fun and
enjoy.

Holmesdale Challenge

Challenge 2

Equipment

- Bouncy ball



How many bounces can you do in one minute?

Challenge: How many bounces can you do when you alternate catching hands?

Holmesdale Challenge

Challenge 3

Equipment

- Skipping Ropes
- Stopwatch



How many skips can you do in 1 minute?

"GIVE IT
A TRY"